

# ARTS VILLAGE IN GHANA: A SELF- SUFFICIENT AND INFINITELY RENEWABLE CANVAS.

The organisation of the Arts Village is trying to:

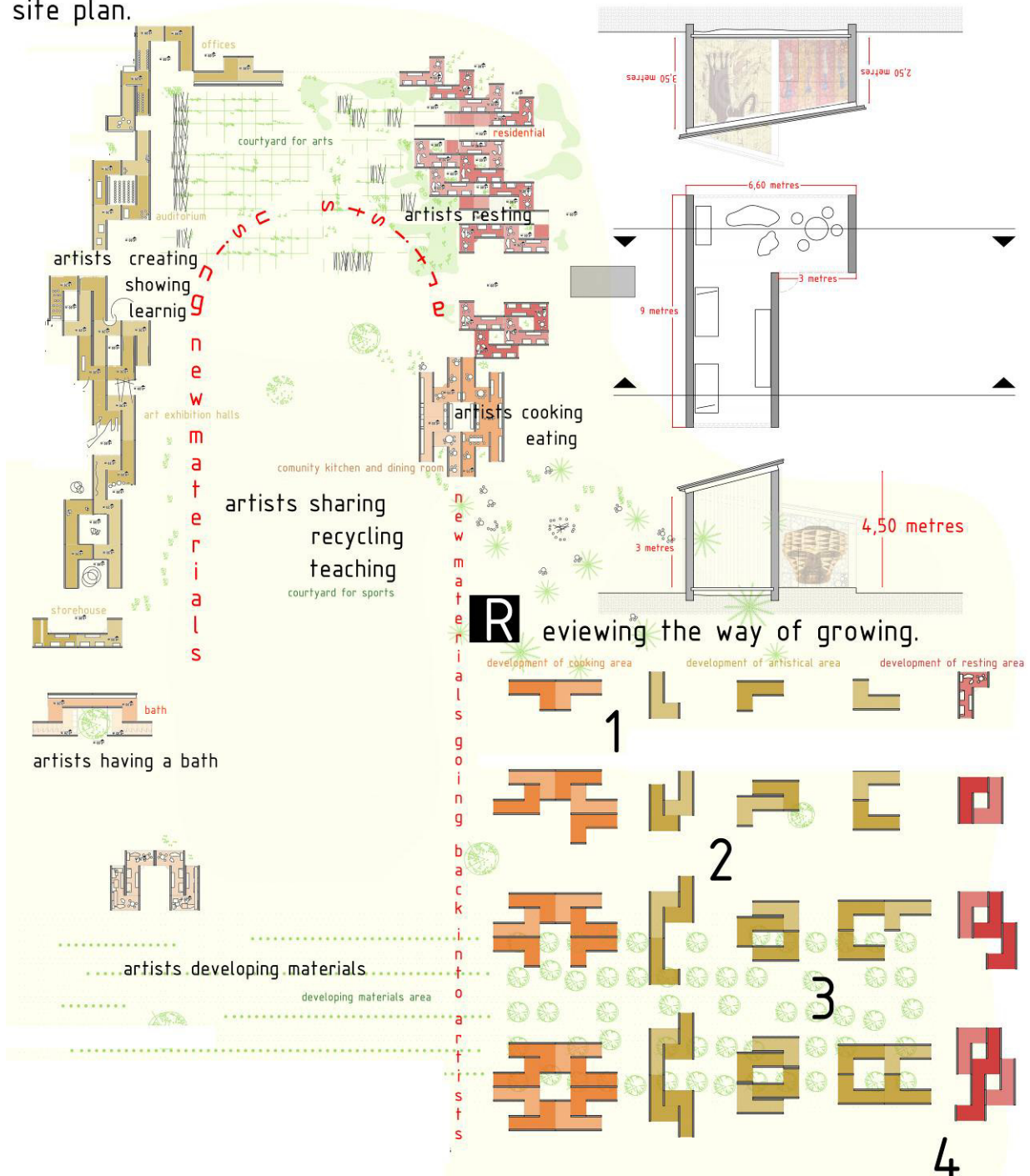
Firstly, liberate a big central space for sharing, learning and socializing between artists.

Secondly, create an integrated art in life cycle. Materials extracted from the earth are used by artists, to make their homes and to create a canvas on which to express their feelings.

The art, and the materials that make possible the art are renewed by the artist as they maintain their homes and their villages.

The artists without restriction will look to create, investigate and express themselves freely, whilst caring for their environment.

site plan.



I propose a simple modular structure that offers a variety of different possible solutions, giving free rein to the imagination of the resident artists

**S**elf-production. Local materials. Easily built.

**ROOFS:**

- 1.- Bamboo logs
- 2.- Waterproof: mix of pulp from african cactus.
- 3.- Insulation: palm fibre mixed with local earth.
- 4.- Structure: wooden beam every 80 cm and air camera.

**LATTICE WINDOW:**

- 1.- Bamboo logs mixed with eath and palm fibres, will get a controlled light into the buildings. They also will give a natural ventilation.
- 2.- Art hanged on bamboo logs outside and/or inside.
- 3.- Art WITH bamboo logs.

**WALLS:**

- 1.- Bamboo logs for special areas (auditorium or main entrances...). Looking for more protection and identity
- 2.- Air camera between bamboo logs.
- 3.- Waterproof: mix of pulp from african cactus. It will make a suitable surface for arts on it as well.
- 4.- Structure and insulation: 30 cm of earth and palm fibre walls.
- 5.- Cob in interior walls for artist' creations.

**FLOORS:**

- 1.- Wooden beam structure and air camera in resting areas. Wooden finished over the structure. Comfortable areas.
- 2.- Earth mixed with pulp from african cactus in art areas. Art and paintins are on the floor, Furthermore they're heavier areas.
- 3.- Waterproof paths with gravel and pulp from african cactus.

**OTHERS:**

- 1.- Using T shape earth bricks to make shelves, different lattice windows or filters to separate spaces. Even it can be used to make green and red floors, with grass or plants between the bricks.

The ecological modules have created both open and enclosed spaces, some covered and some uncovered, providing extraordinarily diverse village habitations.

A comfortable living and working environment is created by roof ventilation, walls and floors, and the lattice window maintains a regular temperature throughout the year.

With two walls providing an ever present canvas, each module will be tailored by the resident artist to their own artistic style, and so the deceptively simple modular design will create unexpected diversity.

### A LIFE CYCLE:

Raw materials extracted from the environment – raw materials processed by the villagers – raw materials used as a canvas – raw materials maintained for the continuance of expressing thoughts and feelings – raw materials revitalised by the artistic life cycle.



## A SUSTAINABLE MODEL (TIME, BUDGET AND FINANCIAL COMPONENTS):



The Arts Village is self- built and self sustaining by a process of continuous recycling and reviewing. The necessary raw materials of wood, earth and cob are taken from the local environment in a sustainable way, from the village's development zone consisting of forest and an earth extraction area.

The initial budget has been allocated to the development of efficient material extraction and processing, resulting that in a short period of time replacement materials will have no further cost for the Arts Village inhabitants.

Initial invest will be dedicated to buy wood and other resources that aren't available yet.

It's important to try that the basic essentials like living, sleeping, resting and having a canvas where express oneself, have no economic cost because, this way money will be spent in progress and improvements and not only in the basic essentials.



Every module is an L shape of three metres width and 9 metres length. Every time you make a new module you will spend less time so every day the process is shorter because the modules are all the same and the process will be best- known by workers- artists.