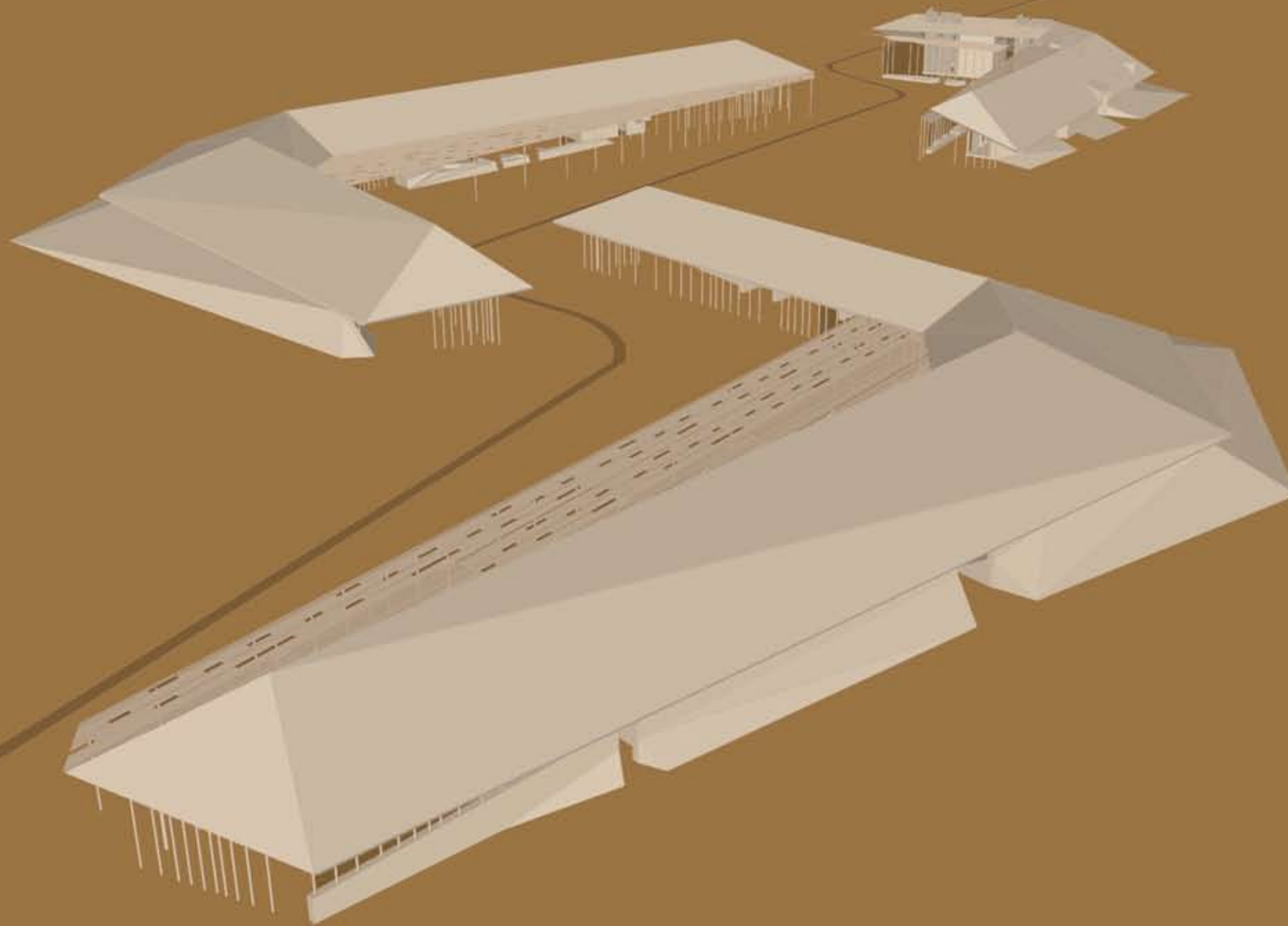


abetenim arts village

claire taggart



abetenim arts village

The village is made up of three open courtyards, arranged along a public walkway that winds its way through the complex, from private residences to open community spaces, with live, work and leisure functions overlapping and interweaving throughout. All spaces are designed to be multi-functional and easily adaptable.

The buildings are constructed in local materials, with help from the local arts community who will also be involved in designing and creating the new residences, studios and public spaces.

The linked courtyard units have also been designed to be suitable for replication and multiplication on different sites across suburban Ghana, with numerous options for various different configurations and layouts.

The residential courtyards are opened up, with public walkways passing through the shared communal space between them. Shared bathrooms with showers and washing facilities are positioned at the hinge of the courtyard, with the main covered social areas opening out into the garden.

Each courtyard consists of five houses, of 4 or 5 beds. The design of the housing units is based on the idea of adaptable and personalisable spaces for either short-term or permanent residency, that can flip from being private to public, and can be extended to meet the residents' needs.

The houses are built with rammed earth construction and built into compacted earth banks, which also serve as seating, tables and workbenches.

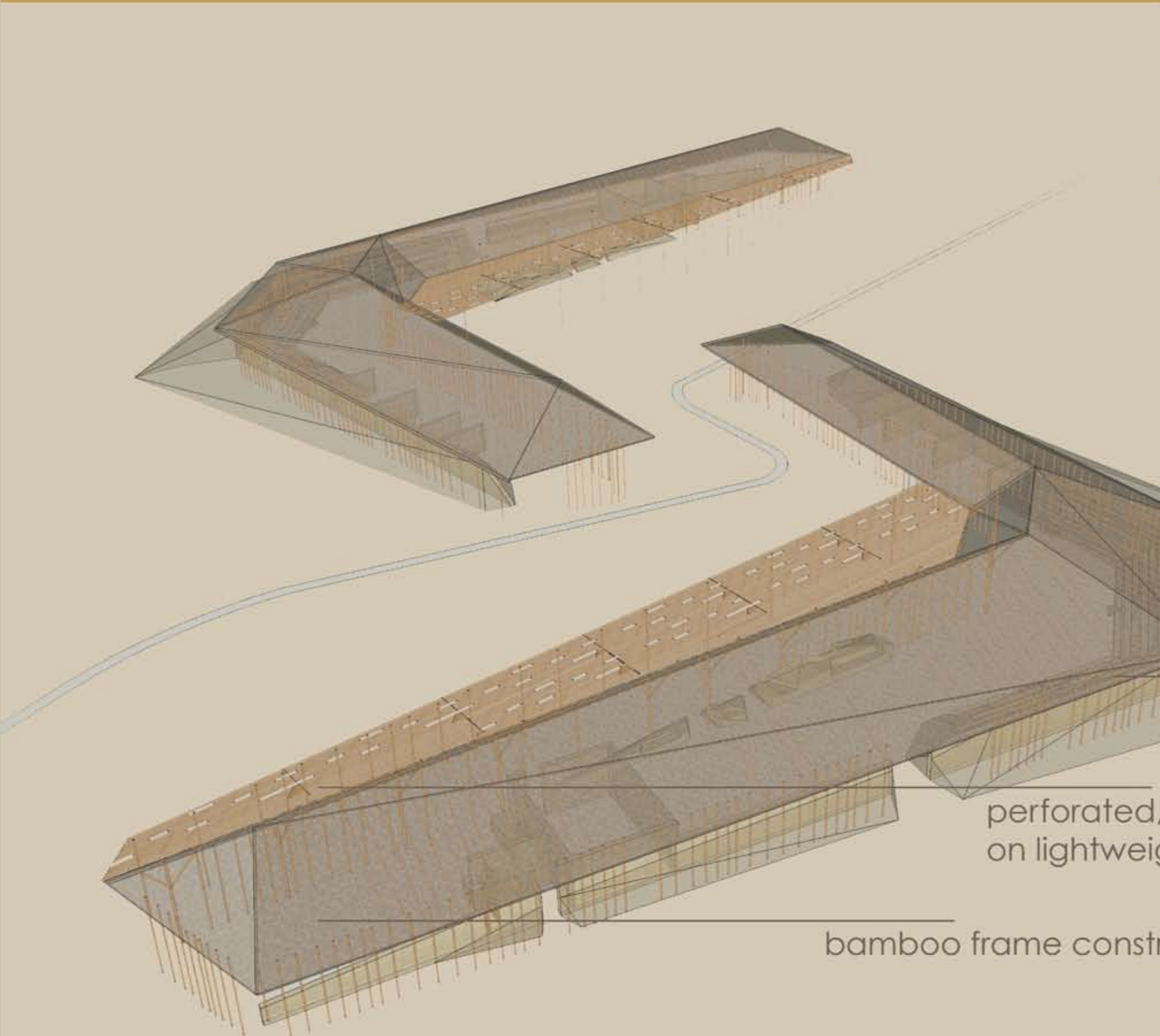
The roof is constructed using a traditional technique of wooden frame and woven raphia palm leaves, with a light bamboo sunshade cover to protect walls from direct sunlight and provide a shady outdoor area in summer. Raphia palms, bamboo and other plants and trees will be planted in and around the site for added protection and shelter from tropical storms, as well as providing on-site, immediately available material for roof repairs and replacements.

abetenim arts village

theatre courtyard structure



compacted earth banks flank single storey walls supporting bamboo roof structure with woven palm thatch roof



compacted earth banks form the base of the structure...

... giving strength to the bamboo supports set into them

theatre seats and public courtyard seating set into earth banks

perforated, twine-bound bamboo sun shade supported on lightweight bamboo frame

bamboo frame construction with woven raphia palm canopy



At the central hinge of the open wings of the courtyard is a spacious theatre, with rows of seating set into an earth bank, looking out over the courtyard space and sports ground.

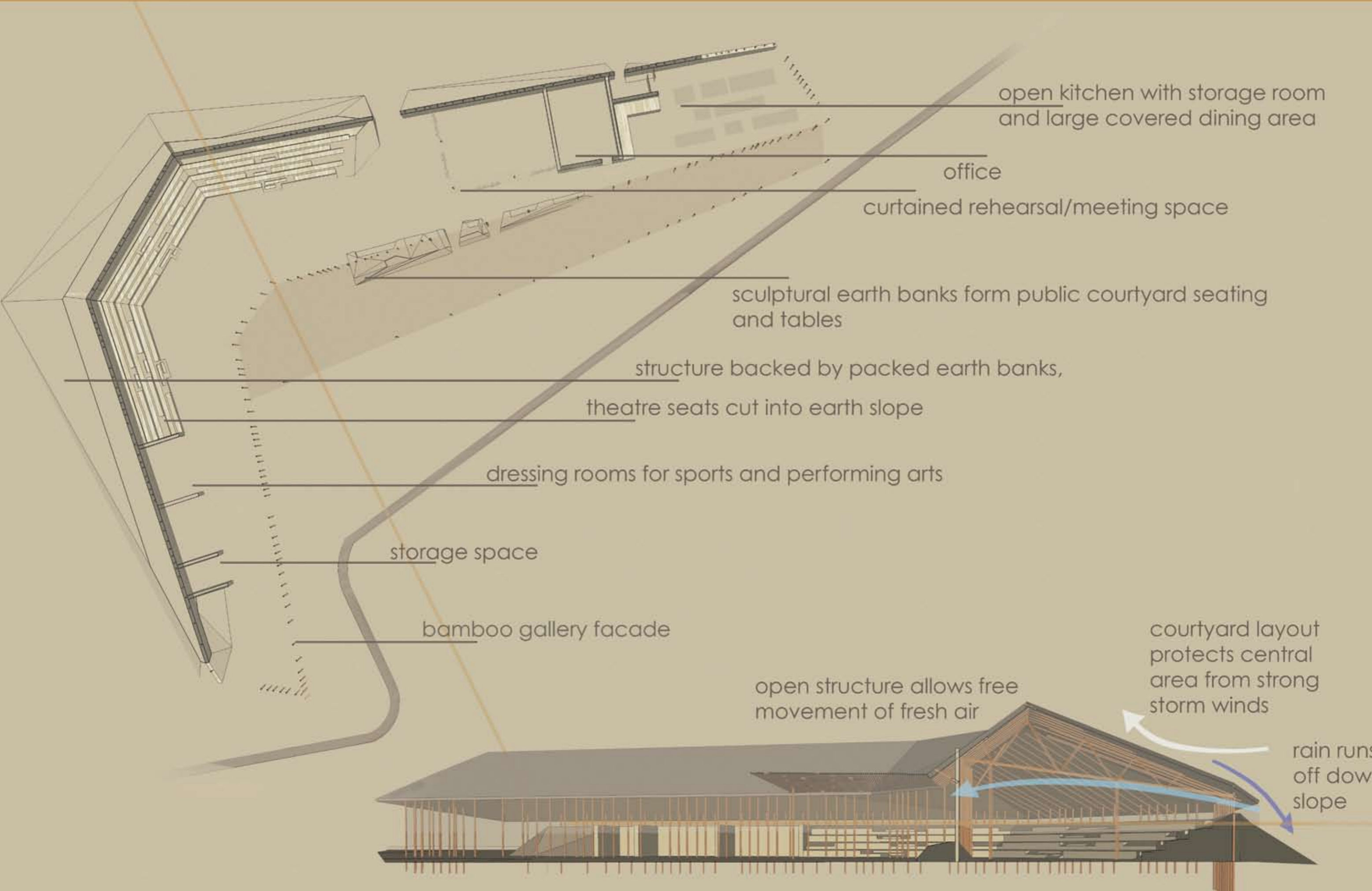
There is also an office, storage room, changing and shower facilities and an open kitchen with a large seating area.

The covered space also serves as a gallery or exhibition hall for displaying art and craft works as well as staging performing arts.

Smaller rehearsal or events rooms can be closed off from the main space using a system of heavy woven curtains on a bamboo frame.

A shaded gallery space runs along the inner edge of the courtyard/sportsground. This serves as a shaded spectator gallery for sports events, as well as an open shady space for summer, where public workshops and displays can be held.





abetenim arts village

residential courtyard



Each courtyard consists of five 4-5 bed houses arranged around a shared garden, with garden seating set in earth banks under a light bamboo shade, and a public walkway passing through the centre.

The facade of each residential unit slides back to open up the house completely to the communal courtyard.

Shared bathrooms with showers and washing facilities are positioned at the hinge of the courtyard.

The design of the housing units is based on the idea of adaptable and personalisable spaces for either short-term or permanent residence...

section through residential courtyard

customisable bamboo and woven cloth shutters

palm thatch roof on simple bamboo structure

cut into ground to provide a living/seating area and to assist in keeping climate cool

bamboo sunshade to protect walls from sun and to provide a shaded outdoor space

garden seating set into earth banks

20cm step to prevent income of water during heavy rainy season storms

two small bedrooms, separated from shared living space by bamboo screens and curtains

earth built up around walls for strength and to help the space cool



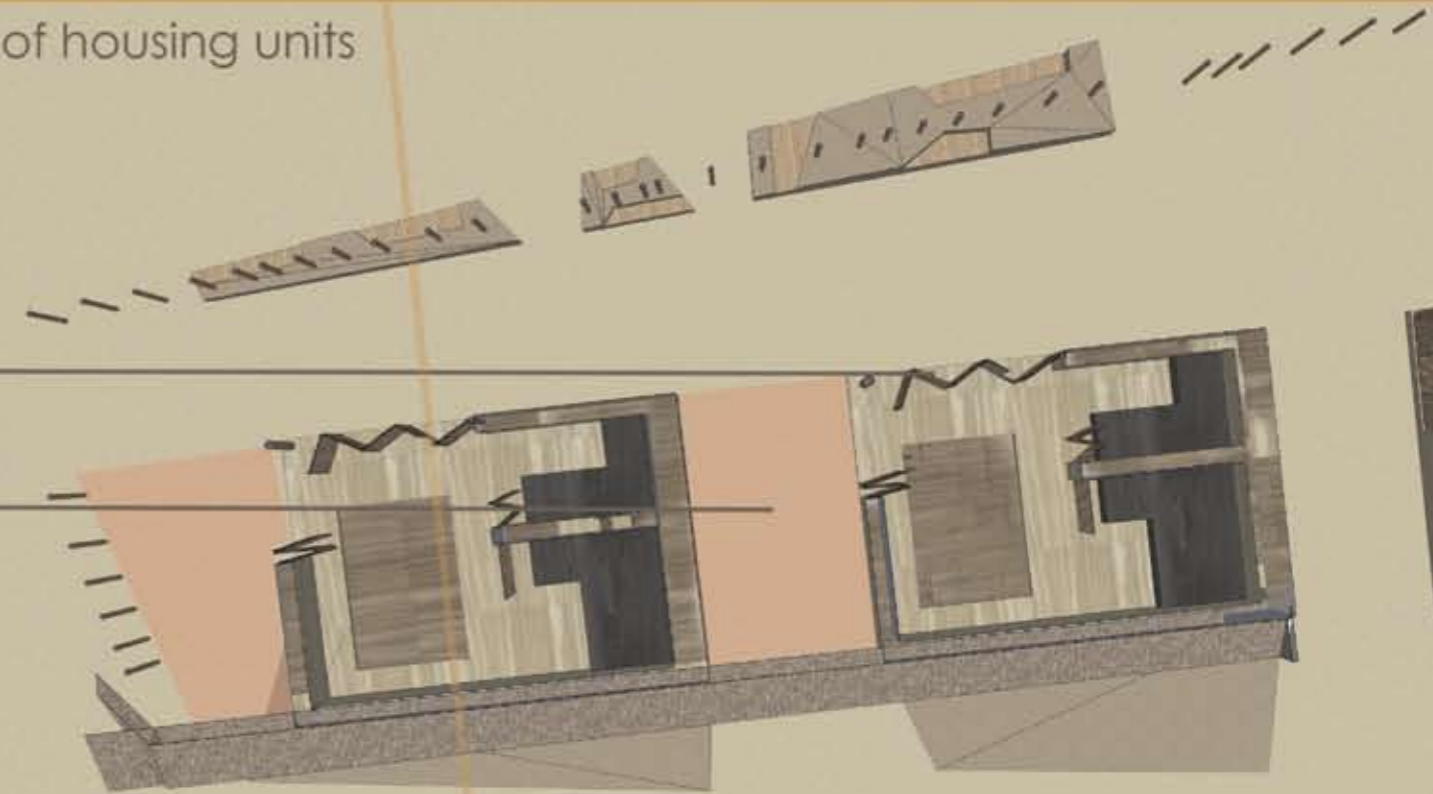


Customisable bamboo art screens make up the houses' facades. Different fabrics or other materials (e.g. beads or plastics) can be fixed or woven into the frames so each facade will be different.

views of unit facades

plan of housing units

sliding bamboo shutter screens open the living room space up to the communal courtyard



each unit has a multi-purpose covered outdoor living space: for social activities, craft work to be done from home and for potential expansion e.g. a growing family or addition of an arts studio



The arts studios are set out in the same courtyard arrangement as the theatre with earth partitioning and partially-partitioning walls.

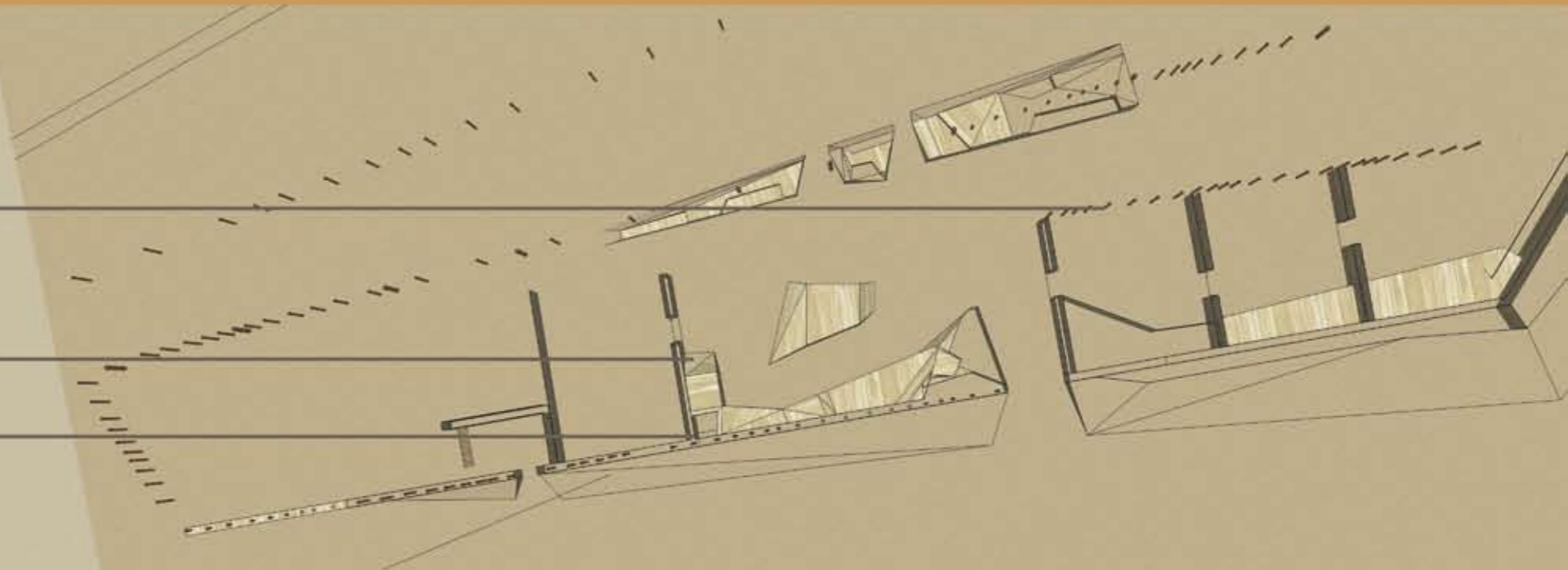
facilities, like water are in shared open communal areas, built into low earth walls.

A basic modular divided layout and structure is provided, but the wall facing into the courtyard is left as a bare bamboo frame, with enclosing curtains and so can be altered and adapted as wished
Spaces can be altered permanently or left adptable for different functions.

bamboo and curtain partitions

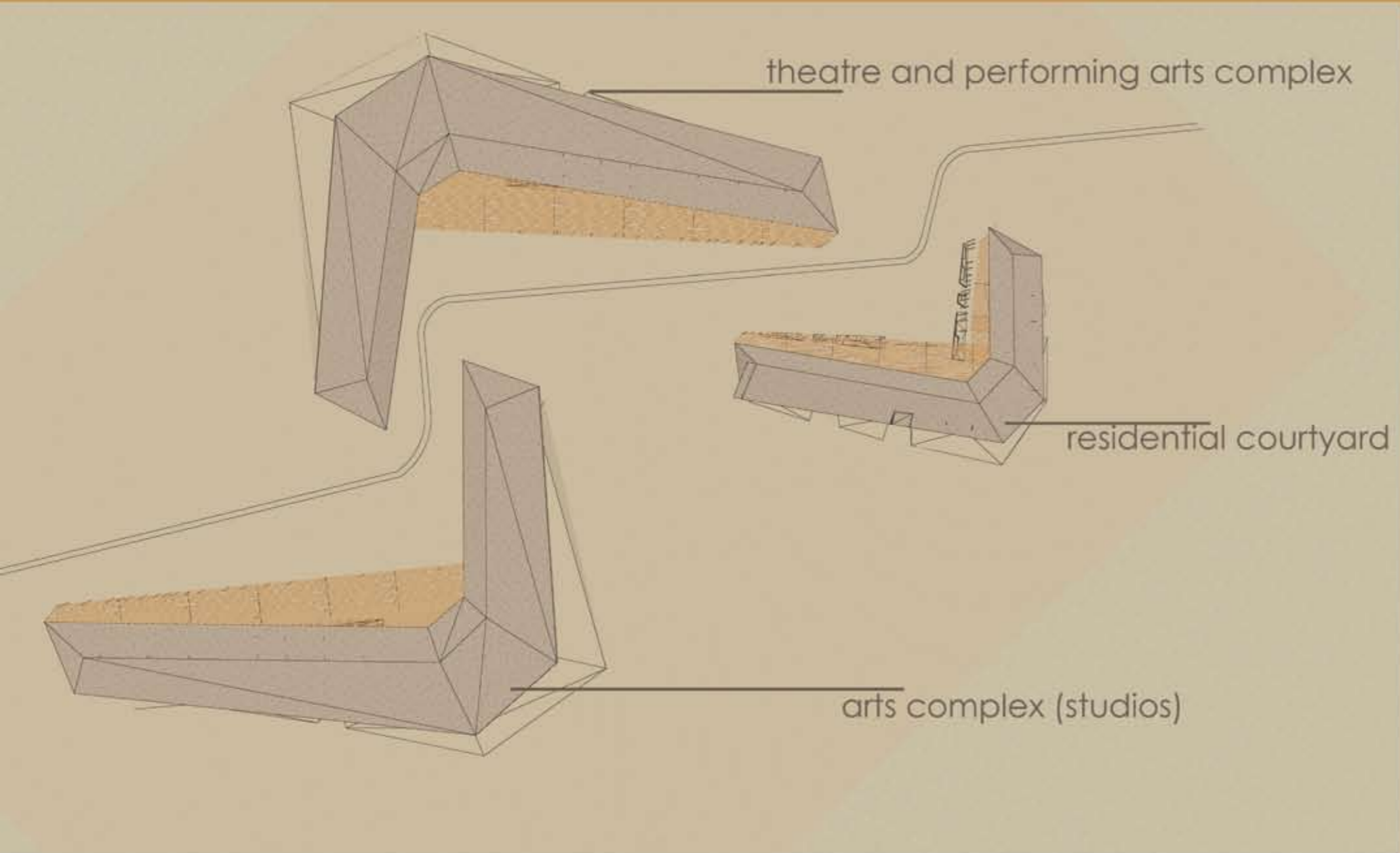
earth banks forming seating, tables and bases for fixtures and services

studio wall partitions



abetenim arts village

courtyards



The village is made up of a collection of open courtyards, scattered along a public walkway that winds its way through the complex, from private residences to open community spaces, with live, work and leisure functions overlapping and interweaving throughout.

The shape of the courtyards means that they always provide a sociable, communal layout and are suitable for reproduction for increased accommodation requirements on other sites in suburban Africa.

